

AUTO OPEN SERIES

CAP PRESS

OPERATOR'S MANUAL



Hotronix®

Safety Instructions

When using your heat press,
basic precautions should always be followed,
including the following:

1. Read all instructions.
2. Use heat press only for its intended use.
3. To reduce the risk of electric shock, do not immerse the heat press in water or other liquids.
4. Never pull cord to disconnect from outlet, instead grasp plug and pull to disconnect.
5. Do not allow cord to touch hot surfaces, allow heat press to cool completely before storing.
6. Do not operate heat press with a damaged cord or if the equipment has been dropped or damaged. To reduce the risk of electric shock, do not disassemble or attempt to repair the heat press. Take it to a qualified service person for examination and repair. Incorrect assembly or repair could increase the risk of fire, electric shock, or injury to persons when the equipment is used.
7. This appliance is not intended for use by persons (including children) with reduced physical, sensory or mental capabilities, or lack of experience and knowledge, unless they have been given supervision or instruction concerning use of the appliance by a person responsible for their safety.
8. Close supervision is necessary for any heat press being used by or near children. Do not leave equipment unattended while connected.
9. Burns can occur when touching hot metal parts.
10. To reduce the likelihood of circuit overload, do not operate other high voltage equipment on the same circuit.
11. If an extension cord is necessary, then a 20 amperage rated cord should be used. Cords rated for less amperage may overheat. Care should be taken to arrange the cord so that it cannot be pulled or tripped over.

SAVE THESE INSTRUCTIONS

Product Warranty Registration

Log onto www.Hotronix.com/registration
You must provide the Hotronix® heat press
serial number and model information.

Machine View	4
Control Panel Guide	5
Operating Instructions	6-11
Connecting the System	6
Turning the System On	7
Adjusting the Temperature	8
Adjusting the Time	9
Adjusting the Pressure	10
Printing and Pressing	11
Replacement Parts List	12
Parts Location Guide	13
Electrical Schematic	14
Contact	15

FRONT VIEW



LED Display

Located on the opposite side of the press

Circuit Breaker

Power Supply

Cap Hold Down Lever



Lift Handle

12V Magnet

Pressure Adjustment Knob

Power ON/OFF Switch

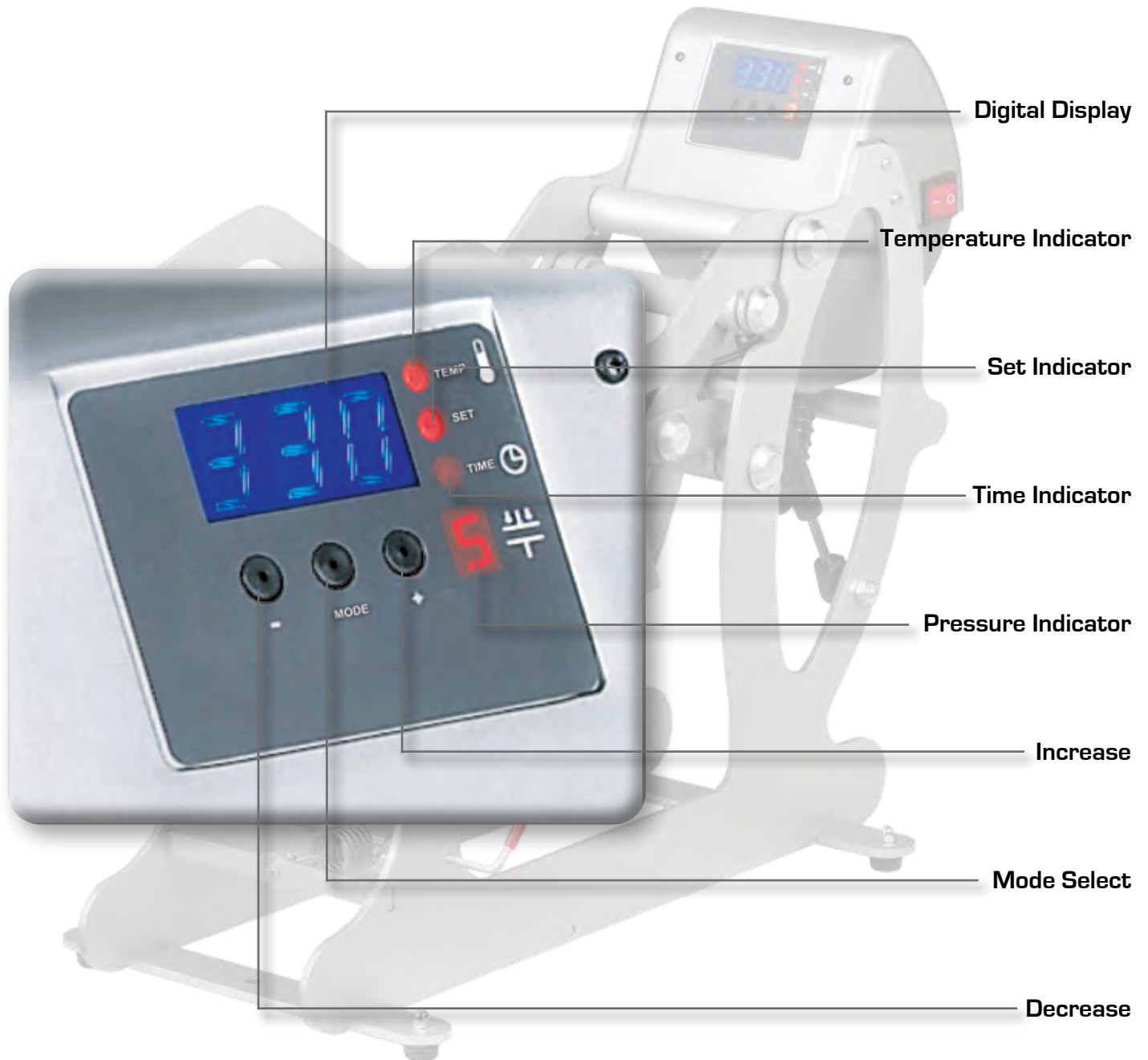


SIDE VIEW



AUTO OPEN SERIES

Control Panel Guide



AUTO OPEN CAP PRESS

The Auto Open Cap Press Operating Instructions are designed with the user in mind. Carefully read and follow the step-by-step instructions for best results.



- To avoid burns, do not touch the heated platen during use.
- Keep hands clear of the upper platen of the press during platen lock down as the pressure may cause injury.
- Press should be placed on a sturdy, suitable stand at least 36"L x 24"W x 29"H.
- Work area must be kept clean, tidy and free of obstructions.
- Power supply cord must be disconnected before cleaning or servicing press.

Connecting the System

1. CONNECT THE POWER CORD

1.1 Connect the power cord into a properly grounded electrical outlet with a sufficient amperage rating.

■ VOLTAGE

120 Volt - The Auto Open Cap Press requires a full 10 amp grounded circuit for 120 volt operation.

220 Volt - The Auto Open Cap Press requires a full 10 amp grounded circuit for 220 volt operation.

- **EXTENSION CORDS** If used, should be as short as possible and not less than 12 gauge. Heavy duty cords are recommended.

- **CIRCUITS** that have less than 10 amps or that have other high demand equipment or appliances (especially more than one heat seal machine) plugged in, should not be used.

NOTE: If the supply cord is damaged, it must be replaced by the manufacturer, its service agent or a similarly qualified person in order to avoid hazard. Use SJT type, 300 V.

CAUTION Failure to follow these instructions will cause:

1. Erratic controller functions.

2. Inaccurate displays and slow heat-up.

3. The circuit breaker to disengage.

Turning the System On

2. SWITCH THE SYSTEM ON

- See the diagram below for switch placement.

NOTE: The Auto Open Cap Press is equipped with an Auto Sleep Mode. When the machine is not in use for a period of two hours, it will enter an energy saving sleep mode. To restore to normal operating mode, press any button on the display panel and allow the heat press to return to the target temperature.

- 2.1 Locate the packaging bolt positioned on the top-center of the press. Packaging bolt must be removed prior to turning the press on or operating the press.



- 2.2 Now, locate the Power ON/OFF Switch on the side of the press, then turn the Power Switch on.



Power ON/OFF Switch



Adjusting the Temperature

3. ADJUST THE TEMPERATURE

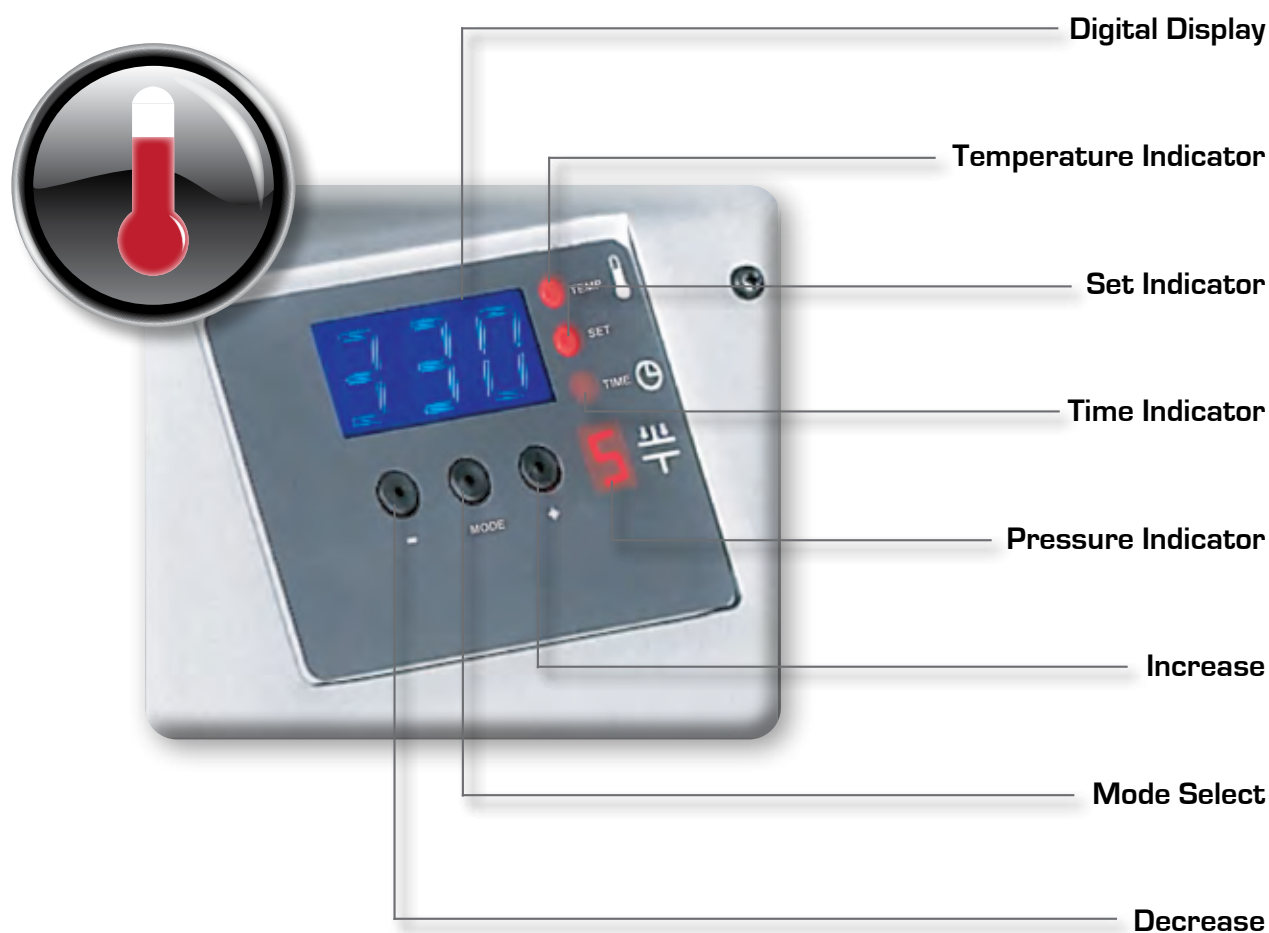
- Locate the LED Display on the Press.

3.1 Press the Mode Select button located in the center of the Control Panel.

The [SET] and [TEMP] lights located next to the display will illuminate indicating you are in the adjust temperature mode.

3.2 Next, press the [-] button located to the left of the Mode Select button to lower the temperature setting, or press the [+] button located to the right of the Mode Select button to raise the temperature setting. The temperature can be set from 176° F (79° C) to 430° F (220° C).

- The LED will display changes as you make them.



Adjusting the Time

4. ADJUST THE TIME

- Your Auto Open, Cap Press has two time settings. This will allow you to set different times when a two hit application is required. For single hit applications, you simply set both time settings the same.

- 4.1 Once you have adjusted the temperature, press the Mode Select button again. This will advance you to the Time #1 mode. The set and time lights will illuminate, indicating that you are in the Time #1 mode.
- 4.2 Adjust the time in the same manner that you adjusted the temperature. Once you have the Time #1 set, push the Mode Select button again to advance to the Time #2 setting. All three red LED lights will illuminate indicating that you are in the Set Time #2 Mode. Select the desired time and push the Mode Select button again to exit the time settings. All lights will be off and the press will return to the print mode.



REMEMBER: Press the Mode Select button **ONCE** to advance to the Adjust Temperature Mode



- 4.3 Press the Mode Select button **A SECOND TIME** to advance to the Time #1 mode.
- 4.4 Press the Mode Select button **A THIRD TIME** to advance to the Time #2 Settings.
- 4.5 Press the Mode Select button **A FOURTH TIME** to return to the Heat Up/Operating Mode.

Adjusting the Pressure

5. ADJUST THE PRESSURE

5.1 First, locate the LED Display on the Press.
[See figure 1]

- The Pressure Adjustment Knob is located in the center of the heat platen
[See figure 2]

5.2 Adjust the pressure by turning the knob clockwise to increase pressure and counter clockwise to decrease pressure.

PRESSURE READOUT

A visual Pressure Readout is located on the lower right side of the LED Display. When the handle is locked into the Print Position, a pressure number will be displayed. Readout will be on a scale of 0 - 9. A 0 Pressure readout would indicate no pressure at all and 9 would indicate very heavy pressure.
[See figure 1]



1 - 3 = Light Pressure
4 - 7 = Medium Pressure
8 - 9 = Heavy Pressure



Figure 1

5.3 To adjust the Pressure, simply turn the Pressure Adjustment Knob to the right or clockwise to increase the Pressure and to the left or counter clockwise to decrease the Pressure. The readout will display the Pressure when locked down in the print position.

REMEMBER: To allow for the thickness of your cap when adjusting the pressure.



Pressure Adjustment Knob

Figure 2

WARNING: Structural damage caused by excessive pressure is not covered under the limited warranty!

Printing / Pressing

6. PRESS

- Once your equipment has reached the designated temperature:

- 6.1 Pull the "Cap Hold Down Lever" up and towards the operator and load the cap onto the lower platen.
- 6.2 Pull out the sweatband and position the cap so that it clears the upper platen when the machine is closed.
- 6.3 Push the "Cap Hold Down Lever" down and away from the operator. This will stretch and hold the cap from moving.



- 6.4 Position your application and lower and lock the heat platen into the press position. This will start the automatic timing process.

- The timer will automatically count down and lift the heat platen into the "UP" position when the press cycle is complete.

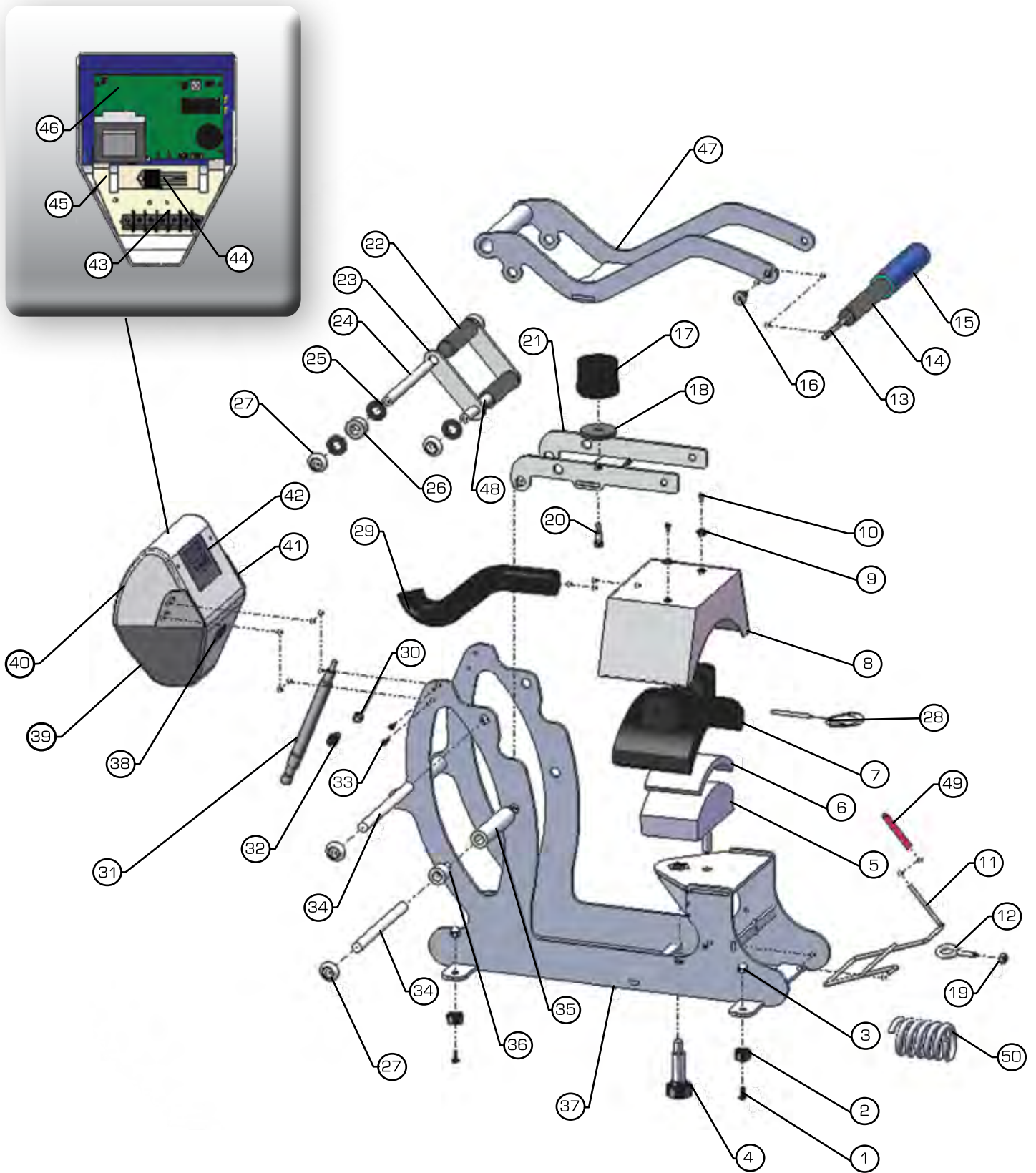
NOTE: Please be aware after time is complete, gas shocks will automatically release the platen into the "UP" position.

- The time will automatically re-set and you are ready to continue with the next application.

AUTO OPEN SERIES

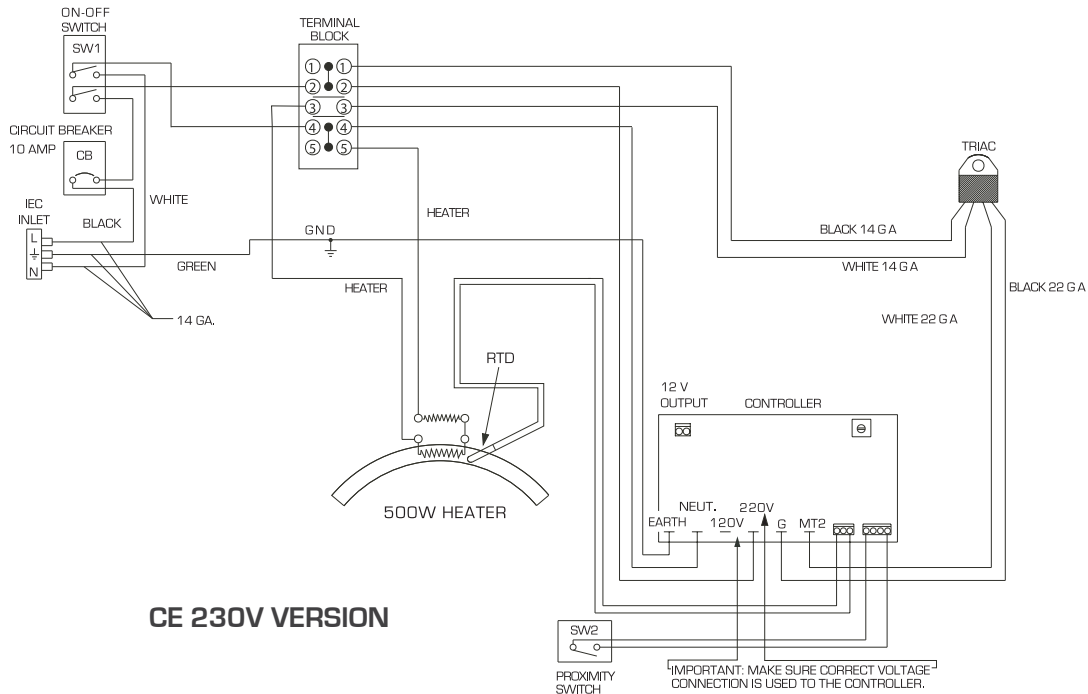
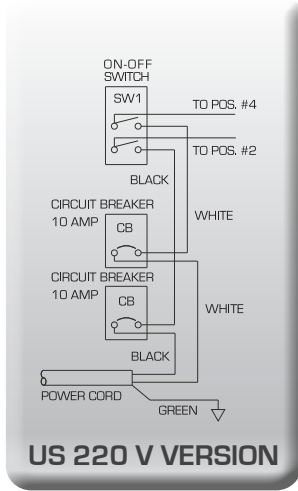
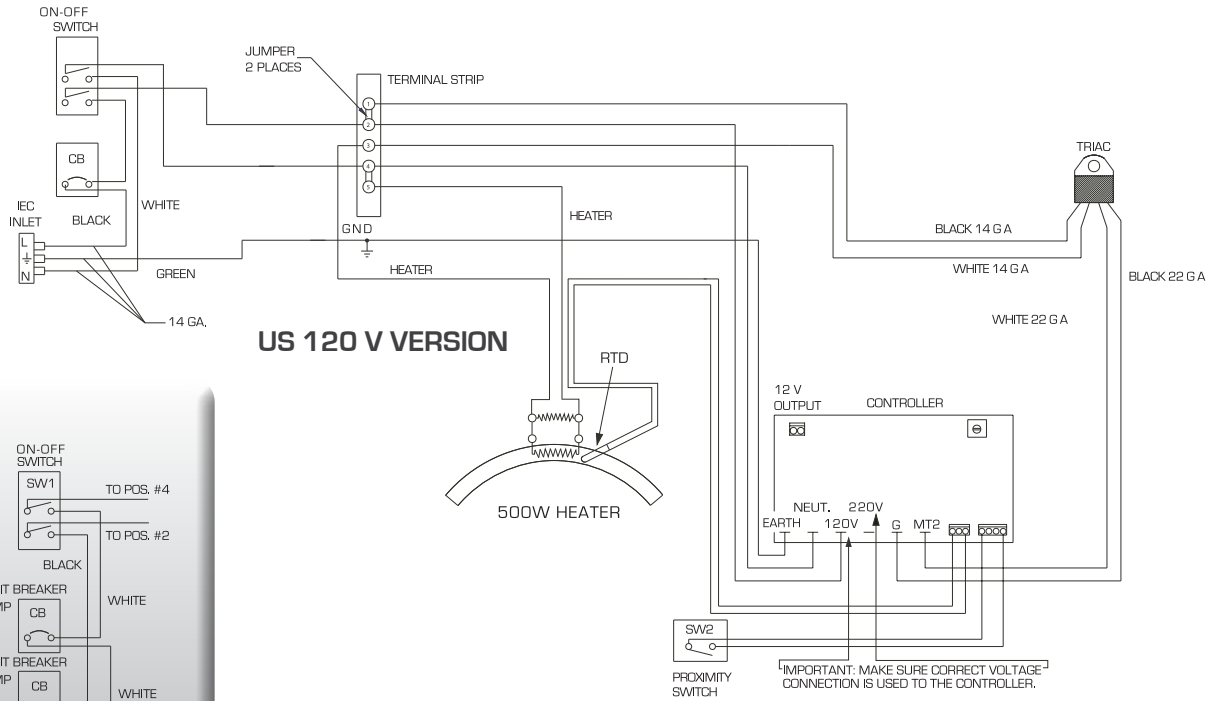
Replacement Parts List

Item #	Part Name	Part #	Qty.
1	Hex Soc Button HD #10-32 x 1/2"	3-1011-164	4
2	Rubber Foot	1-1256	4
3	Acorn Hex Nut	3-1011-182	4
4	Adjustment Spindle	1-1023	1
5	Cap Mandrel	2-1050	1
6	Silicone Pad Cap Blue	1-2137	1
7	Heat Platen	2-1010	1
8	Heat Platen Cover Cap	2-1663	1
9	Finish Washer	1-1063	2
10	Cover Screw 10-24x1/2"	3-1011-217	2
11	Cap Hold Down	2-1042	1
12	Eye Bolt	1-1085	1
13	All Thread Pin 1/4 - 20 x 4 3/4"	1-1042-1	1
14	PVC Spacer 1/2" I.D. x 5"	1-2096	1
15	Blue Foam Grip	1-2115	1
16	JCN Nut	2-1006-2	2
17	Electromagnet	1-1945-1	1
18	Silicone Pad 5/16" I.D. x 1 3/4" O.D.	1-2104	1
19	Nylon Nut	2-1006-56	1
20	Hex Soc HD Shoulder Screw 5/16" x 1/2"	3-1011-233	1
21	Cap Heater Arm	KIT 3-6908	1
22	PVC Spacer 1/2" I.D. x 3.30"	1-1049-1	1
23	Lift Links	KIT 3-6909	2
24	Steel Pin 1/2" Dia. x 5 7/8"	2-1055-9	1
25	Nylon Washer	1-1048-3	8
26	Steel Spacer	1-2114	2
27	Hub Cap 1/2"	1-1107-1	8
28	Probe	1-1272-1	1
29	Conduit 13"	1-1048-2	1
30	Nylon Hex Nut	2-1006-20	2
31	Gas Spring	1-2246	1
32	Ball Stud 10mm	1-1939	2
33	Phillips Pan HD Screw #6 - 32 x 1/2"	3-1011-152	4
34	Steel Pin 1/2" Dia. x 6.45"	2-1055-11	2
35	PVC Spacer 1/2" I.D. x 3.80"	1-1049-5	1
36	PVC Spacer 1/2" I.D. x .7"	1-1049-4	2
37	Cap Base	KIT 3-6907	1
38	Proximity Switch	1-1211	1
39	Circuit Breaker	1-1456	1
40	STX Housing	4-1172	1
41	On/Off Switch	1-2087	1
42	Display Overlay	1-2018-1	1
43	Terminal Block	1-1290	1
44	Triac	1-1059	1
45	Controller Bracket	2-1661	1
46	SSTT Control Board	1-2129	1
47	Cap Handle Assembly	KIT 3-6910	1
48	Steel Pin 1/2" Dia. x 4.69"	2-1055-15	1
49	Vinyl Handle	1-1089	1
50	Spring	1-1073	1



AUTO OPEN SERIES

Electrical Schematic



Hotpoint[®] Xispix

