

The MAXX™ Press
DIGITAL CAP
OPERATOR'S MANUAL



Hotronix® 

Safety Instructions

When using your heat press,
basic precautions should always be followed,
including the following:

1. Read all instructions.
2. Use heat press only for its intended use.
3. To reduce the risk of electric shock, do not immerse the heat press in water or other liquids.
4. Never pull cord to disconnect from outlet, instead grasp plug and pull to disconnect.
5. Do not allow cord to touch hot surfaces, allow heat press to cool completely before storing.
6. Do not operate heat press with a damaged cord or if the equipment has been dropped or damaged. To reduce the risk of electric shock, do not disassemble or attempt to repair the heat press. Take it to a qualified service person for examination and repair. Incorrect assembly or repair could increase the risk of fire, electric shock, or injury to persons when the equipment is used.
7. This appliance is not intended for use by persons (including children) with reduced physical, sensory or mental capabilities, or lack of experience and knowledge, unless they have been given supervision or instruction concerning use of the appliance by a person responsible for their safety.
8. Close supervision is necessary for any heat press being used by or near children. Do not leave equipment unattended while connected.
9. Burns can occur when touching hot metal parts.
10. To reduce the likelihood of circuit overload, do not operate other high voltage equipment on the same circuit.
11. If an extension cord is necessary, then a 20 amperage rated cord should be used. Cords rated for less amperage may overheat. Care should be taken to arrange the cord so that it cannot be pulled or tripped over.

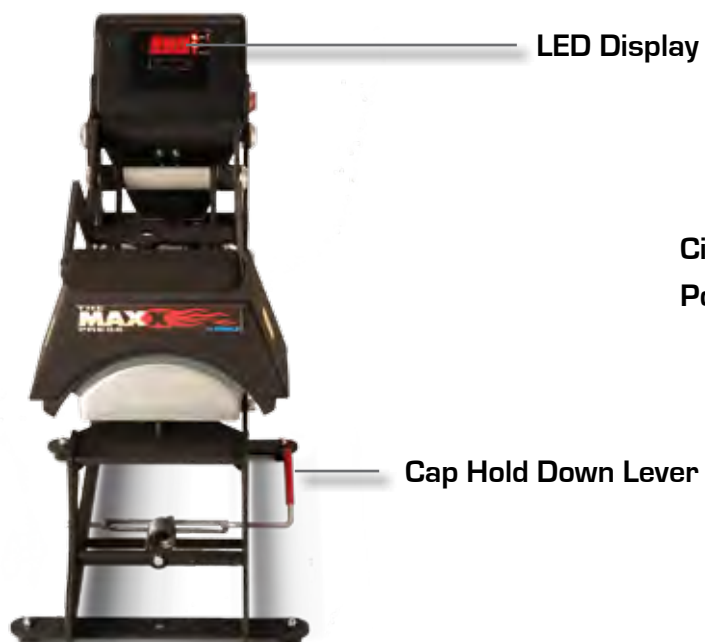
Product Warranty Registration

Log onto **www.Hotronix.com/registration**
You must provide the Hotronix® heat press
serial number and model information.

Safety Instructions	2
Machine View	4
Control Panel Guide	5
Operating Instructions	6-11
Connecting the System	6
Turning the System On	7
Adjusting the Temperature	8
Adjusting the Time	9
Adjusting the Pressure	10
Pressing	11
Replacement Parts List	12
Parts Location Guide	13
Electrical Schematic	14
Contact	15

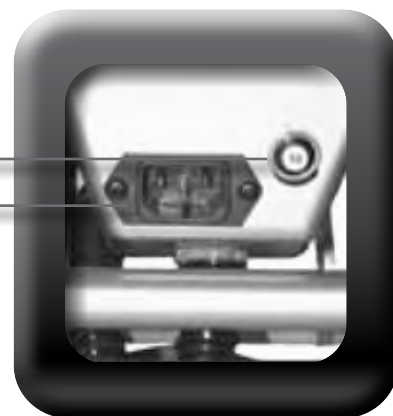


FRONT VIEW



Located in the Back
of the Press

Circuit Breaker
Power Supply



Lift Handle

SIDE VIEW

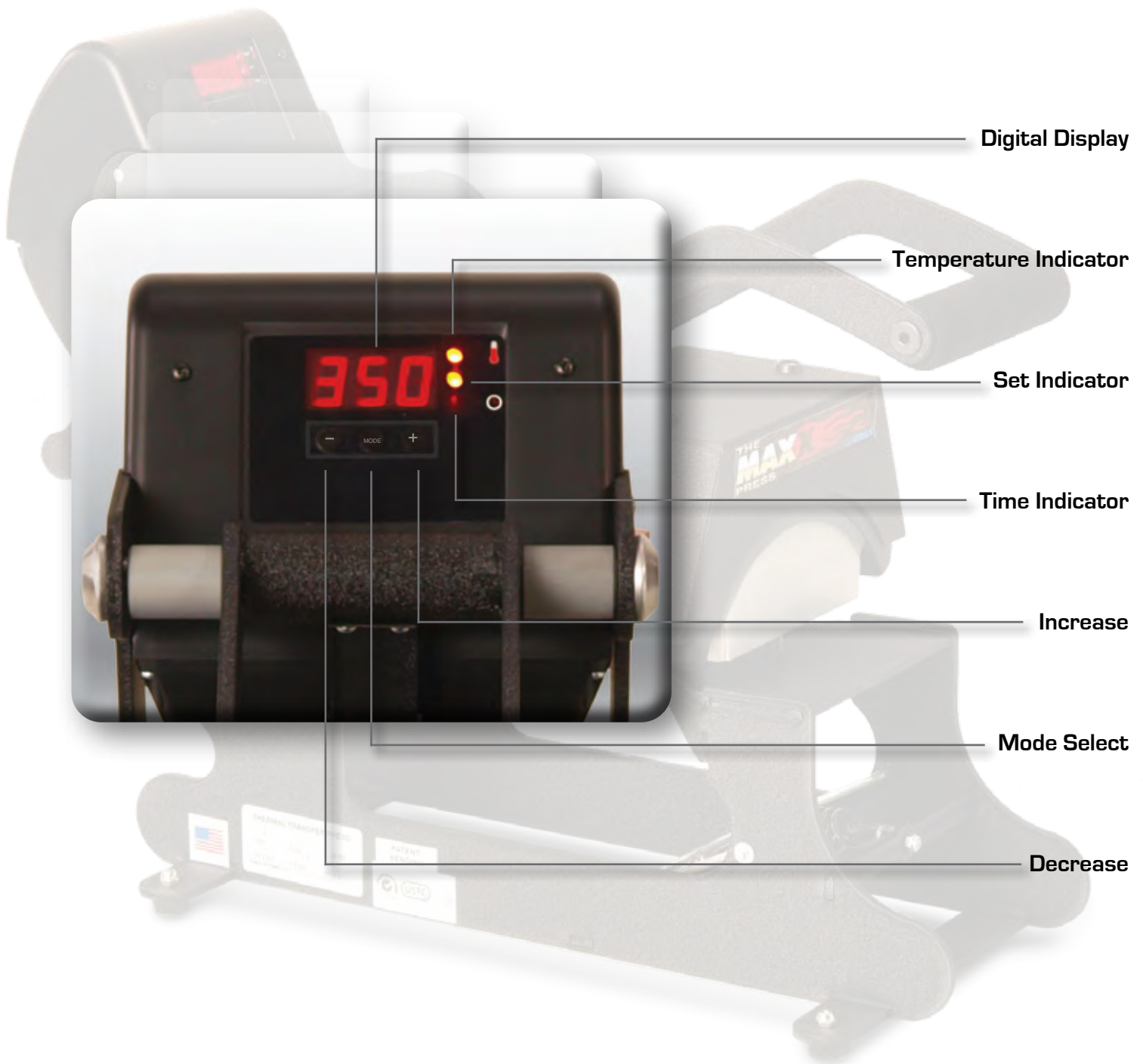
Pressure Adjustment Knob

Power ON/OFF Switch



The MAXX™ Press

Control Panel Guide



The MAXX™ Press Operating Instructions

The MAXX™ Press DIGITAL CAP

The MAXX™ Press Digital Cap Operating Instructions are designed with the user in mind. Carefully read and follow the step-by-step instructions for best results.



- To avoid burns, do not touch the heated platen during use.
- Keep hands clear of the upper platen of the press during platen lock down as the pressure may cause injury.
- Press should be placed on a sturdy, suitable stand at least 36"L x 24"W x 29"H.
- Work area must be kept clean, tidy and free of obstructions.
- Power supply cord must be disconnected before cleaning or servicing press.

Connecting the System

1. CONNECT THE POWER CORD

1.1 Connect the power cord into a properly grounded electrical outlet with a sufficient amperage rating.

- **VOLTAGE:** 120 Volt - The MAXX™ Press Digital Cap requires a full 20 amp grounded circuit for 120 volt operation.
220 Volt - The MAXX™ Press Digital Cap requires a full 10 amp grounded circuit for 220 volt operation.
- **EXTENSION CORDS:** If used, should be as short as possible and not less than 12 gauge. Heavy duty cords are recommended.
- **CIRCUITS:** that have less than 10 amps or that have other high demand equipment or heat presses plugged in should not be used.

NOTE: If the supply cord is damaged, it must be replaced by the manufacturer, its service agent or a similarly qualified person in order to avoid hazard. Use SJT type, rated 300 V for replacement.

CAUTION: Failure to follow these instructions will cause:

1. Erratic controller functions.
2. Inaccurate displays and slow heat-up.
3. The circuit breaker to disengage.

Turning the System On

2. SWITCH THE SYSTEM ON

- See the diagram below for switch placement.

2.1 Locate the lift handle and position the heat platen in the “UP” (load) position.

2.2 Now, locate the Power ON/OFF Switch on the side of the press, then turn the Power Switch on.



Power ON/OFF Switch



Adjusting the Temperature

3. ADJUST THE TEMPERATURE

- Locate the LED Display on the Press.

3.1 Press the Mode Select button located in the center of the Control Panel.

The (SET) and (TEMP) lights located next to the display will illuminate indicating you are in the adjust temperature mode.

3.2 Next, press the [-] button located to the left of the Mode Select button to lower the temperature setting, or press the [+] button located to the right of the Mode Select button to raise the temperature setting. The temperature can be set from 205° F (96° C) to 430° F (220° C).

- The LED will display changes as you make them.



NOTE: The temperature indicator will only display temperatures 200°F (93°C) and up.

Adjusting the Time

4. ADJUST THE TIME

- 4.1 Once you have adjusted the temperature, press the Mode Select button again. This will advance you to the Time mode. The set and time lights will illuminate, indicating that you are in the Time mode.
- 4.2 Adjust the time in the same manner that you adjusted the temperature. Select the desired time and push the Mode Select button again to exit the time settings. All lights will be off and the press will return to the Print Mode.



Adjusting the Pressure

5. ADJUST THE PRESSURE

- The Pressure Adjustment Knob is located directly under the lower platen.

5.1 Adjust the pressure by turning the knob clockwise to increase pressure and counter clockwise to decrease pressure.

REMEMBER: To allow for the thickness of your cap when adjusting the pressure.



WARNING: Structural damage caused by excessive pressure is not covered under the limited warranty!

Printing / Pressing

6. PRESS

- Once your equipment has reached the designated temperature:

- 6.1 Pull the “Cap Hold Down Lever” up and towards the operator and load the cap onto the lower platen.
- 6.2 Pull out the sweatband and position the cap so that it clears the upper platen when the machine is closed.
- 6.3 Push the “Cap Hold Down Lever” down and away from the operator. This will stretch the cap and keep it from shifting.



Cap Hold Down Lever

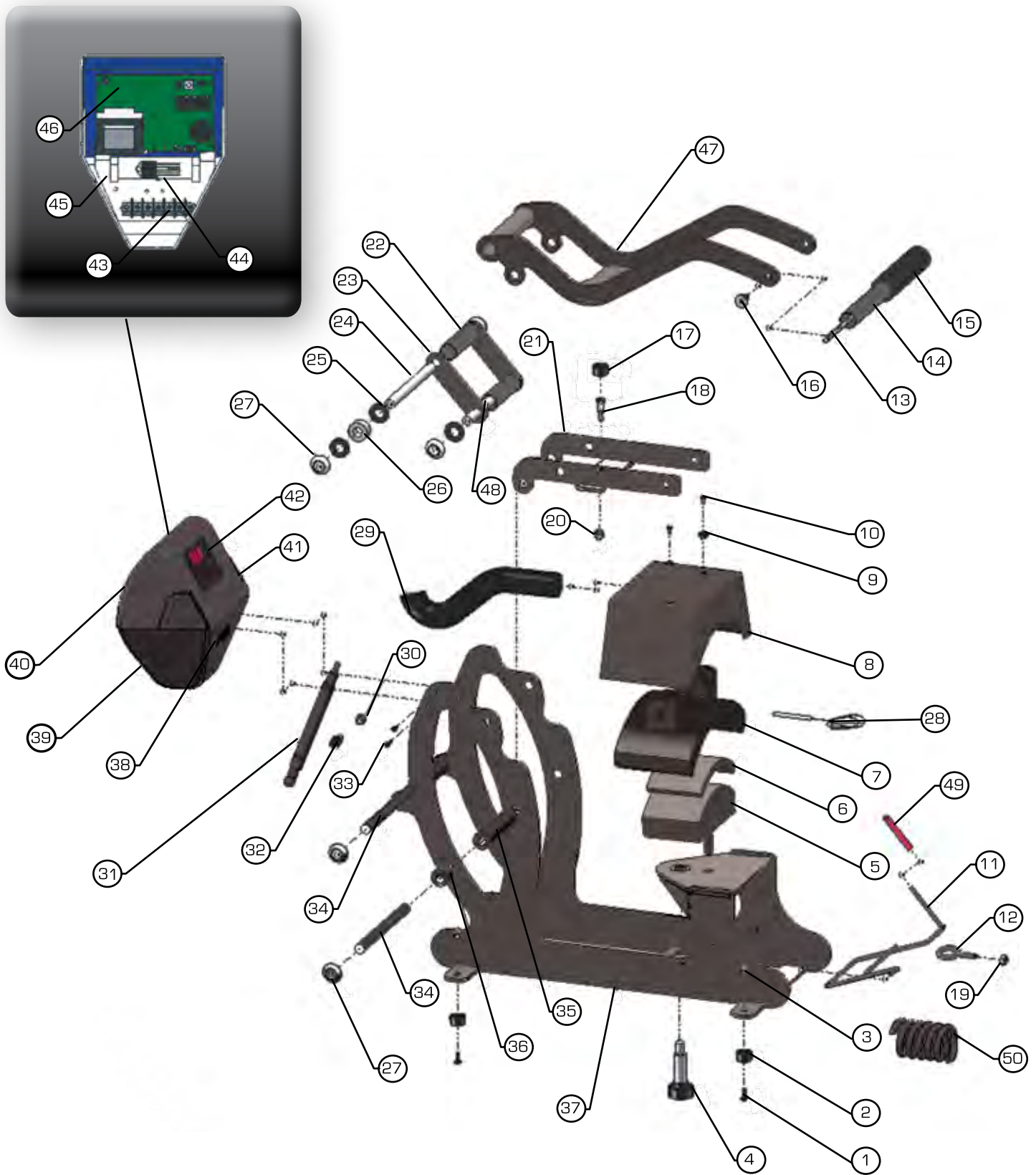


- 6.4 Position your application and lower and lock the heat platen into the press position. This will start the automatic timing process.
- 6.5 The timer will automatically count down and audibly signal you to lift the heat platen into the “UP” position when the press cycle is complete.
 - The time will automatically re-set and you are ready to continue with the next application.

The MAXX™ Press

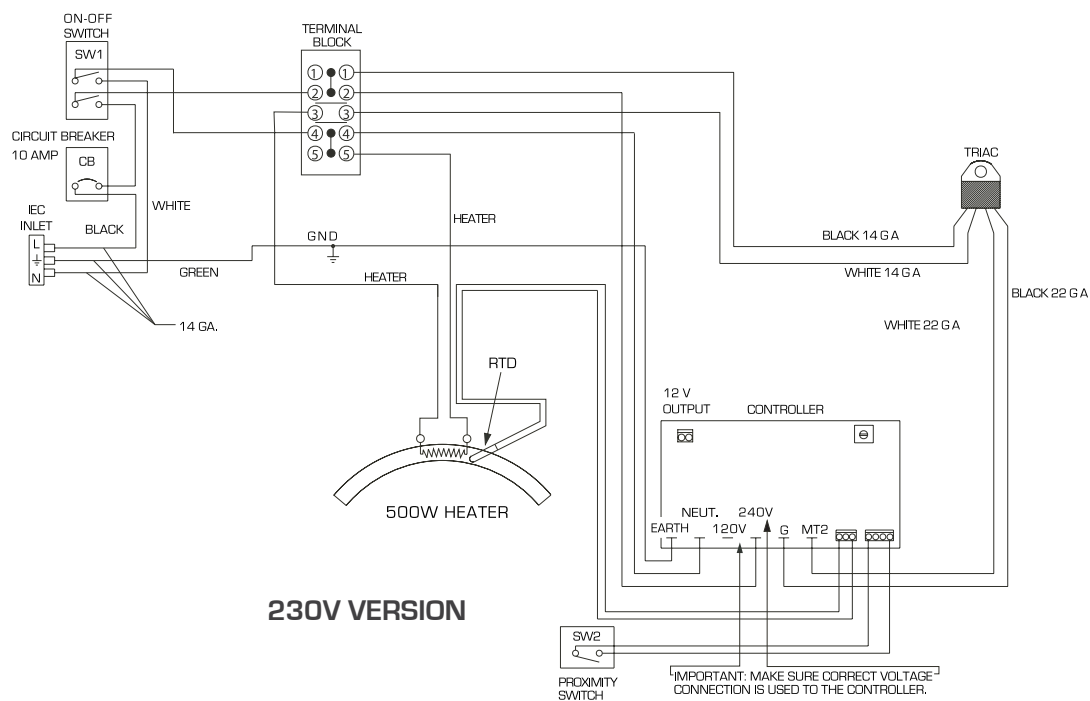
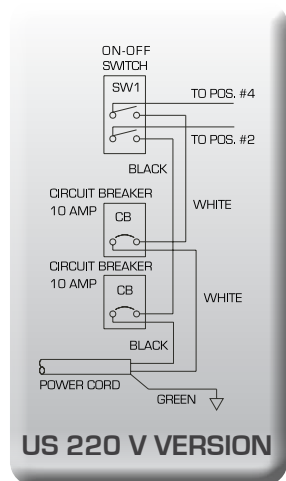
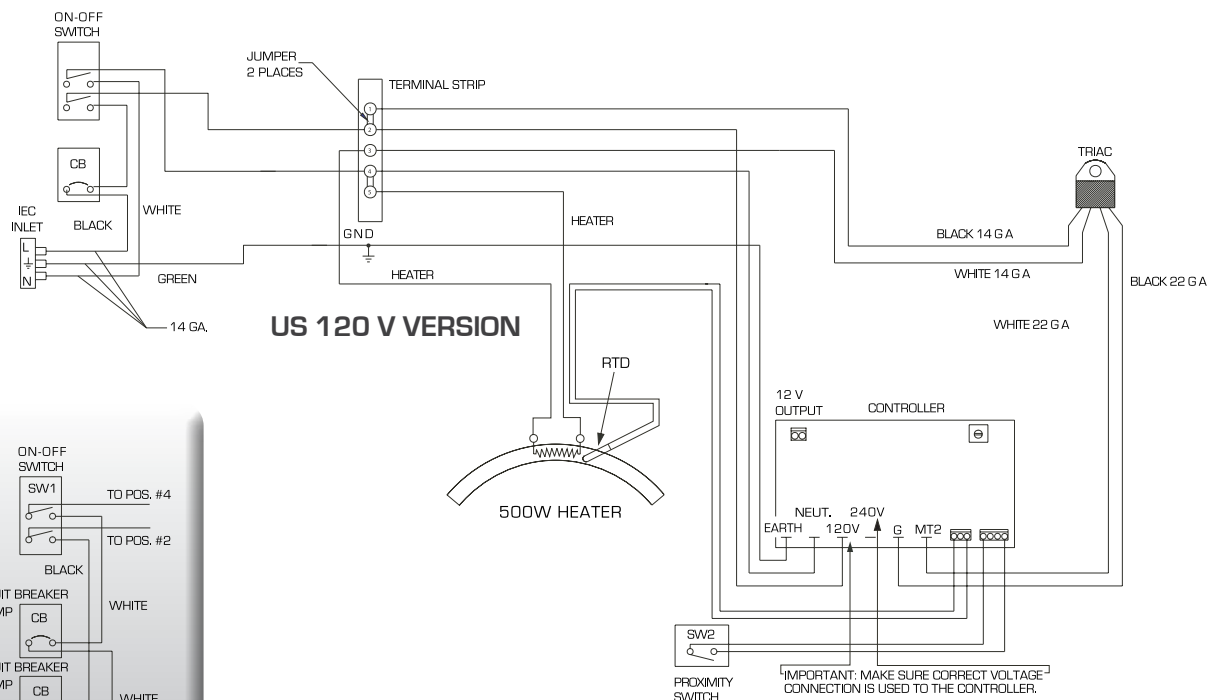
Replacement Parts List

Item #	Part Name	Part #	Qty.
1	Hex Soc Button HD #10-32 x 1/2"	3-1011-164	4
2	Rubber Foot	1-1256	4
3	Acorn Hex Nut	3-1011-182	4
4	Adjustment Spindle	1-1023	1
5	Cap Mandrel	2-1050	1
6	Silicone Pad Cap Gray	1-1050	1
7	Heat Platen	2-1010	1
8	Heat Platen Cover Cap	2-1663	1
9	Finish Washer	1-1063	2
10	Cover Screw 10-24x1/2"	3-1011-217	2
11	Cap Hold Down	2-1042	1
12	Eye Bolt	1-1085	1
13	All Thread Pin 1/4 - 20 x 4 3/4"	1-1042-1	1
14	PVC Spacer 1/2" I.D. x 5"	1-2096	1
15	Foam Grip	1-1540	1
16	JCN Nut	2-1006-2	2
17	Rubber Foot	1-1256	1
18	Shoulder Bolt	3-1011-121	1
19	Nylon Nut	2-1006-56	1
20	Nylon Nut	2-1006-20	1
21	Cap Heater Arm	KIT 3-6908	1
22	PVC Spacer 1/2" I.D. x 3.30"	1-1049-1	1
23	Lift Links	KIT 3-6909	2
24	Steel Pin 1/2" Dia. x 5 7/8"	2-1055-9	1
25	Nylon Washer	1-1048-3	8
26	Steel Spacer	1-2114	2
27	Hub Cap 1/2"	1-1107-1	8
28	Probe	1-1272-1	1
29	Conduit 13"	1-1048-2	1
30	Nylon Hex Nut	2-1006-20	2
31	Gas Spring	1-2246	1
32	Ball Stud 10mm	1-1939	2
33	Phillips Pan HD Screw #6 - 32 x 1/2"	3-1011-152	4
34	Steel Pin 1/2" Dia. x 6.45"	2-1055-11	2
35	PVC Spacer 1/2" I.D. x 3.80"	1-1049-5	1
36	PVC Spacer 1/2" I.D. x .7"	1-1049-4	2
37	Cap Base	KIT 3-6907	1
38	Proximity Switch	1-1211	1
39	Circuit Breaker	1-1456	1
40	Housing	4-1172	1
41	On/Off Switch	1-2087	1
42	Display Overlay	1-2018	1
43	Terminal Block	1-1290	1
44	Triac	1-1059	1
45	Controller Bracket	2-1661	1
46	SSTT Control Board	1-2017	1
47	Cap Handle Assembly	KIT 3-6910	1
48	Steel Pin 1/2" Dia. x 4.69"	2-1055-15	1
49	Vinyl Handle	1-1089	1
50	Spring Hold Down	1-1073	1



The MAXX™ Press

Electrical Schematic



Hotpoint[®] Xispix

